



Flygt 2075.324

Table of Contents

1 Introduction.....	2
1.1 Specially approved products.....	2
2 Product Description.....	3
2.1 Products included.....	3
2.2 The data plate.....	3
2.3 Product denomination.....	3
3 Exploded View.....	5
3.1 2075.324.....	5
4 Spare Parts.....	7
4.1 2075.324.....	7

1 Introduction

Purpose of this manual

The purpose of this manual is to provide necessary information on spare parts and accessories order.

Disclaimer

Always use genuine Flygt parts. The use of other spare parts or accessories can invalidate any claims for warranty or compensation. Xylem does not take any responsibility for damages that are caused by the use of non-original parts. For more information, contact your local sales and service representative.

Data for ordering spare parts

The following information is needed for spare part orders:

- Serial number of the product
- Part number
- Quantity of bulk material, see * in tables

1.1 Specially approved products

Qualification of personnel

Only Xylem or Xylem-authorized service personnel may undertake repair work on specially approved products.

Dimensional accuracy inspection

Spare parts marked with (Ex) after the part number are subject to dimensional accuracy inspection when used in specially approved products.

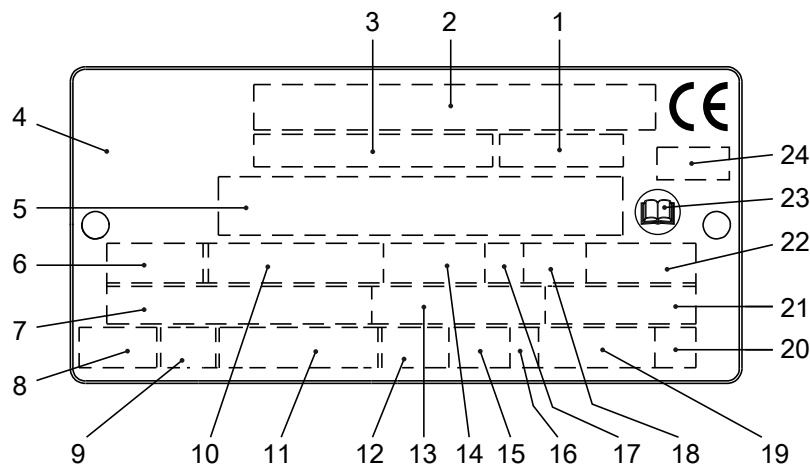
2 Product Description

2.1 Products included

Pump model	Standard	EX	MSHA	Drainage	Sludge
2075.324	X			X	

2.2 The data plate

The data plate is a metal label that is located on the main body of the products. The data plate lists key product specifications. Specially approved products also have an approval plate.



1. Curve code or Propeller code
2. Serial number
3. Product number
4. Country of origin
5. Additional information
6. Phase; type of current; frequency
7. Rated voltage
8. Thermal protection
9. Thermal class
10. Rated shaft power
11. International standard
12. Degree of protection
13. Rated current
14. Rated speed
15. Maximum submergence
16. Direction of rotation: L=left, R=right
17. Duty class
18. Duty factor
19. Product weight
20. Locked rotor code letter
21. Power factor
22. Maximum ambient temperature
23. Read installation manual
24. Notified body, only for EN-approved Ex products

Figure 1: The data plate

2.3 Product denomination

Reading instruction

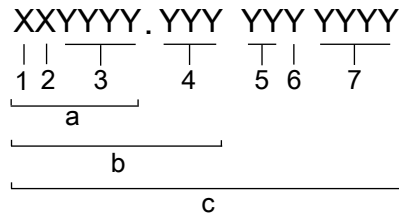
In this section, code characters are illustrated accordingly:

X = letter

Y = digit

The different types of codes are marked up with a, b and c. Code parameters are marked up with numbers.

Codes and parameters



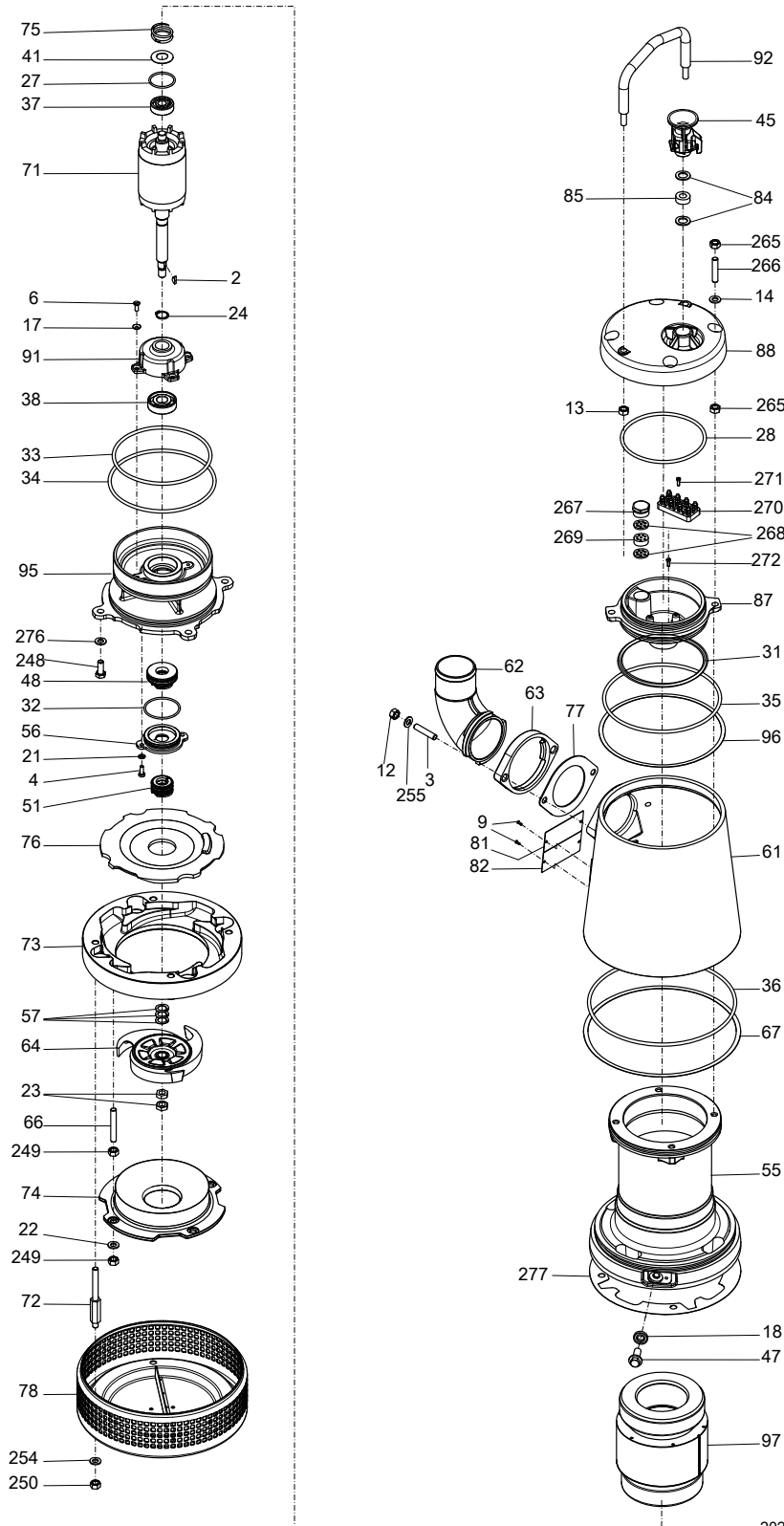
WS006265B

Type of Callout	Number	Indication
Type of code	a	Sales denomination
	b	Product code
	c	Serial number
Parameter	1	Hydraulic end
	2	Type of installation
	3	Sales code
	4	Version
	5	Production year
	6	Production cycle
	7	Running number

3 Exploded View

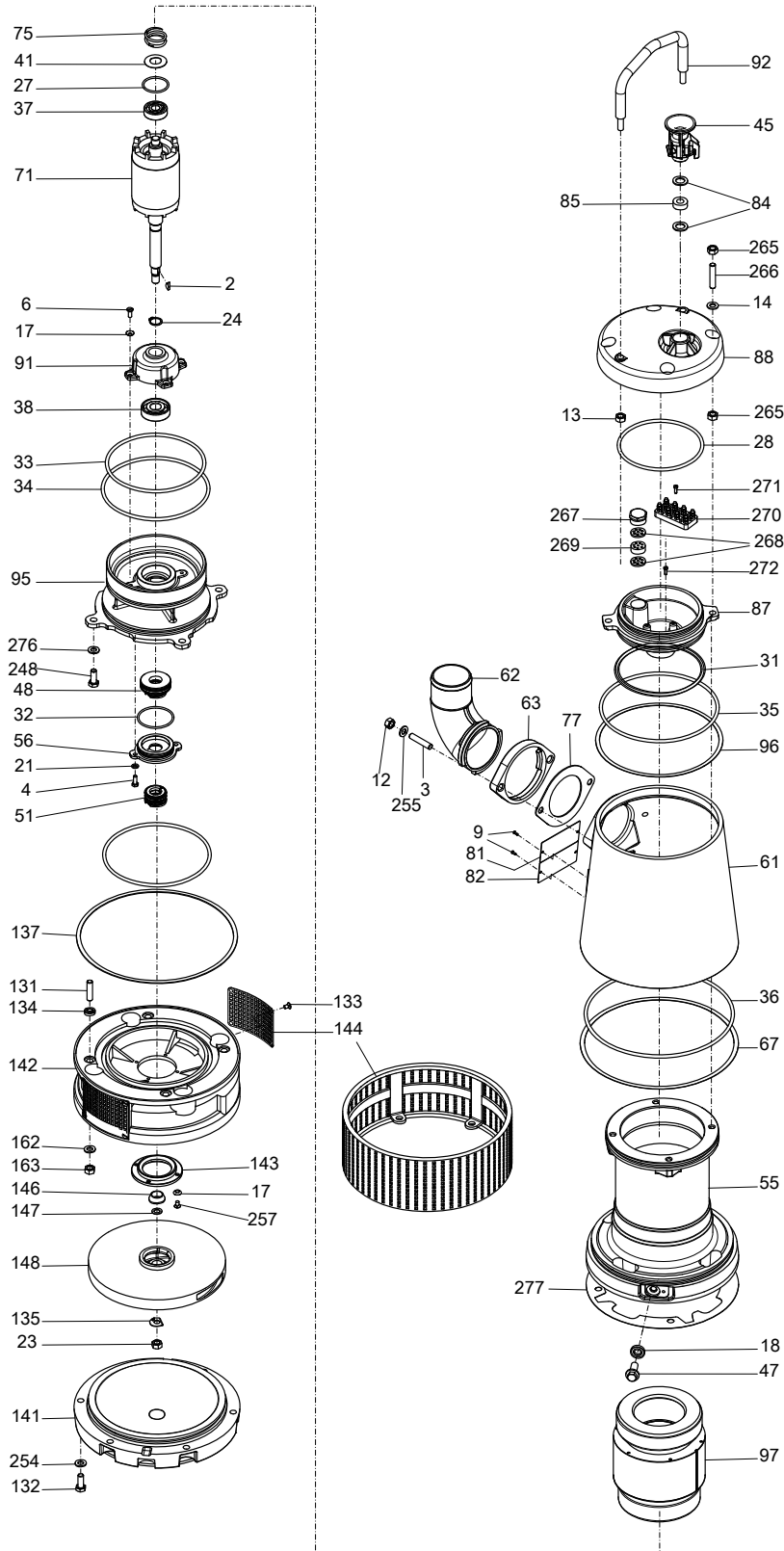
3.1 2075.324

MT, HT



20221A_expl_view_2075.324_MT_HT

ST



20222A_expl_view_2075.324_ST

4 Spare Parts

4.1 2075.324

Pos. No	Part. No	Type	Denomination	Qty/Version
				324
2	80 79 92		Woodruff key WK 4X16 MM HT MT	1
2	80 71 79		Parallel key 6X6X22-A4-220HB ST	1
3	80 97 18		Stud M10X35-A4-70	2
4	81 48 26		Hexagon head screw M6X16-A4-70	2
4	83 38 91		Disc spring B-40X20.4X1.5-1 HT MT	1
6	82 11 84		Hex.socket hd screw 6X16-A4-70	2
9	82 20 90		Drive screw 4X8 A4	4
18	82 50 50		Sealing washer	2
21	82 35 73		Plain washer 6.4X12X1.6-A4-170HV	2
22	82 35 76		Plain washer 10.5X20X2-A4-170HV	4
23	249 84 01		Hexagon nut	2
24	82 58 92		Retaining ring SGA 20	1
27	82 73 99		O-ring 42.2X3 NBR	1
27	82 81 01		O-ring 42.2X3 FPM	1
28	82 75 16		O-ring 144.3X5.7 FPM	1
31	82 74 21		O-ring 144.3X5.7 NBR	1
31	82 75 16		O-ring 144.3X5.7 FPM	1
32	82 74 65		O-ring 59.5X3 NBR	1
32	82 80 90		O-ring 59.5X3 FPM	1
33	82 74 87		O-ring 169.3X5.7 NBR	1
33	82 81 10		O-ring 169.3X5.7 FPM	1
34	82 74 90		O-ring 184.3X5.7 NBR	1
34	82 72 99		O-ring 184.3X5.7 FPM	1
36	82 74 93		O-ring 199.3X5.7 NBR	1
36	82 75 20		O-ring 199.3X5.7 FPM	1
37	83 34 26		Ball bearing 15X42X13 MM	1
38	83 36 01		Ball bearing 20X52X15 MM HT MT	1
38	84 23 10		Ball bearing 20X52X15 MM ST	2
45	94 20 42		Motor cable subcab 4G2.5 Power cable x 1 SUBCAB 4G2,5 12,50 - 13,50mm	*
45	94 19 90		Motor cable subcab S3X2.5+3X2.5/3+S(4X0.5) Power cable x 1 SUBCAB S3x2,5+3x2,5/3+4x1,5 18 - 20mm	*
45	94 20 61		Motor cable subcab 4G1.5+2X1.5 Power cable x 1 SUBCAB 4G1,5+2x1,5 15 - 16mm	*
45	94 20 59		Motor cable subcab 4G2.5+2X1.5 Power cable x 1 SUBCAB 4G2,5+2x1,5 17 - 18mm	*
45	94 20 82		Motor cable subcab 7G2.5+2X1.5 Power cable x 1 SUBCAB 7G2,5+2x1,5 20 - 23mm	*
45	94 21 06		Motor cable Power cable x 1 SUBCAB 10AWG/ 3-2-1-GC 20 - 22mm	*

Pos. No	Part. No	Type	Denomination		Qty/Version
					324
45	94 21 02		Motor cable subcab 14 AWG/7	Power cable x 1 SUBCAB 14AWG/7 18 - 20mm	*
47	214 44 01		Inspection screw		2
48	720 45 03		Mechanical seal WCCR/WCCR FPM		1
51	720 45 02		Mechanical seal WCCR/WCCR FPM		1
55	250 01 51	(Ex)	Stator housing		1
56	250 19 62		Seal ring holder		1
57	250 24 03		Washer 15.5X24X0.5	HT MT	4
57	250 24 05		Washer 15.5X24X0.2	HT MT	5
57	250 24 06		Washer 15.5X24X3	HT MT	1
57	462 76 00		Adjustment washer	ST	2
57	462 76 01		Adjustment washer	ST	4
61	260 44 05		Outer casing		1
62	260 53 50		Discharge connection DN 75	DN 75 Hose	1
62	260 53 51		Discharge connection R 3"	DN 75 Thread : ISO G3A Outer Quick coupling: Storz	1
62	260 53 53		Discharge connection 3-8 NPSM	DN 75 Thread : NPSM 3-8 Outer	1
62	260 52 50		Discharge connection 4"	For hose DN 100	1
62	279 07 04		Discharge connection R 4"	DN 100 Thread : ISO G4A with coupling A Outer	1
62	279 07 05		Discharge connection 4-8 NPSM	DN 100 Thread : NPSM 4-8 Outer	1
62	389 76 03		Discharge connection 2"	For hose DN 50	1
62	389 76 04		Discharge connection G2"	DN 50 Thread : ISO G2A with coupling C Outer	1
62	389 76 05		Discharge connection 2-11 1/2 NPSM	DN 50 Thread : NPSM 2-11 1/2 Outer	1
63	260 54 50		Connection flange		1
64	260 59 04		Impeller	231 MT 50Hz 3-phase Mtrl. Hardened steel	1
64	260 59 05		Impeller	232 MT 60Hz 3-phase Mtrl. Hardened steel	1
64	270 65 02		Impeller	233 HT 50Hz 3-phase Mtrl. Hardened steel	1
64	270 65 03		Impeller	234 HT 60Hz 3-phase Mtrl. Hardened steel	1
64	260 59 84		Impeller	241 MT 50Hz 3-phase Mtrl. stainless steel (ASTM 316L)	1
64	260 59 85		Impeller	242 MT 60Hz 3-phase Mtrl. stainless steel (ASTM 316L)	1
64	270 65 82		Impeller	243 HT 50Hz 3-phase Mtrl. stainless steel (ASTM 316L)	1
64	270 65 83		Impeller	244 HT 60Hz 3-phase Mtrl. stainless steel (ASTM 316L)	1
64	250 09 80		Impeller	261 MT 50Hz 3-phase Mtrl. stainless steel (ASTM 316L) 261 MT 50Hz 3-phase Max ambient temp=90 DC Mtrl. stainless steel (ASTM 316L)	1

Pos. No	Part. No	Type	Denomination	Qty/Version	
				324	
64	250 09 86		Impeller	262 MT 60Hz 3-phase Mtrl. stainless steel (ASTM 316L)	1
64	270 65 80		Impeller	263 HT 50Hz 3-phase Mtrl. stainless steel (ASTM 316L) 263 HT 50Hz 3-phase Max ambient temp=90 DC Mtrl. stainless steel (ASTM 316L)	1
64	270 65 81		Impeller	264 HT 60Hz 3-phase Mtrl. stainless steel (ASTM 316L)	1
64	516 53 00		Impeller	271 ST 50Hz 3-phase Mtrl. aluminium bronze (Cast)	1
64	516 53 01		Impeller	272 ST 50Hz 3-phase Mtrl. aluminium bronze (Cast) 272 ST 60Hz 3-phase Mtrl. aluminium bronze (Cast)	1
66	84 94 95		Stud		4
67	82 74 98		O-ring 249.3X5.7 NBR		1
67	82 80 87		O-ring 249.3X5.7 FPM		1
71	265 19 02	(Ex)	Shaft unit	HT MT	1
71	403 40 01		Shaft unit	ST	1
72	265 28 01		Screw		4
73	274 66 51		Diffuser coat. NBR	HT MT	1
73	274 66 53		Diffuser coat. PU	HT MT	1
73	500 80 00		Diffuser ring	HT MT	1
74	274 86 50		Suction cover UNCOATED		1
75	278 11 00		Compression spring		1
76	278 22 00		Diffuser disc NBR	HT MT	1
76	278 22 01		Diffuser disc PU	HT MT	1
76	278 22 50		Diffuser disc UNCOATED	HT MT	1
77	283 98 00		Gasket		1
77	274 86 03		Suction cover	HT MT	1
77	274 86 04		Suction cover	HT MT	1
78	288 69 00		Strainer unit		1
81	630 68 00		Data plate USE 6306801 AS SPARE PART		1
84	82 40 53		Plain washer 14.5X26.5X2-A2-70	No of cable entries: 1 (12)-14mm No of cable entries: 1 (12)-14mm Plugged cable entry	2
84	82 40 54		Plain washer 16.5X26.5X2-A2-70	No of cable entries: 1 (14)-16mm No of cable entries: 1 (14)-16mm Plugged cable entry	2
84	82 40 56		Plain washer 18.5X26.5X2-A2-70	No of cable entries: 1 (16)-18mm	2
84	82 40 58		Plain washer 20.5X26.5X2-A2-70	No of cable entries: 1 (18)-20mm	2
84	82 40 59		Plain washer 20.5X35X2-A2-70	No of cable entries: 1 (18)-20mm FUS version only	2
84	82 40 60		Plain washer 22.5X35X2-A2-70	No of cable entries: 1 (20)-22mm	2

Pos. No	Part. No	Type	Denomination	Qty/Version	
				324	
85	84 35 28		Seal sleeve (12)-14 MM CR	No of cable entries: 1 (12)-14mm No of cable entries: 1 (12)-14mm Plugged cable entry	1
85	84 35 29		Seal sleeve (14)-16 MM CR	No of cable entries: 1 (14)-16mm No of cable entries: 1 (14)-16mm Plugged cable entry	1
85	84 35 30		Seal sleeve (16)-18 MM CR	No of cable entries: 1 (16)-18mm	1
85	84 35 31		Seal sleeve (18)-20 MM CR	No of cable entries: 1 (18)-20mm	1
85	84 35 34		Seal sleeve (18)-20 MM CR	No of cable entries: 1 (18)-20mm FUS version only	1
85	84 35 35		Seal sleeve (20)-22 MM CR	No of cable entries: 1 (20)-22mm	1
87	253 42 50		Bearing holder		1
87	630 68 00		Data plate USE 6306801 AS SPARE PART	CSA certification plates 3-phase	1
88	250 40 50		Top cover	No of cable entries: 1 (14)-16mm No of cable entries: 1 (14)-16mm Plugged cable entry No of cable entries: 1 (12)-14mm No of cable entries: 1 (12)-14mm Plugged cable entry No of cable entries: 1 (16)-18mm No of cable entries: 1 (18)-20mm	1
88	250 40 51		Cover	No of cable entries: 1 (20)-22mm No of cable entries: 1 (18)-20mm FUS version only	1
91	250 17 51		Bearing cover	HT MT	1
91	389 80 52		Bearing cover	ST	1
92	278 34 01		Lifting handle unit		1
95	250 03 52		Oil housing	HT MT	1
95	261 92 58		Oil housing	ST	1
97	274 16 25		Stator 17-09-2a	6-leads 3-phase 50 Hz 2-poles 110V D 190V Y P2=3,70kW 6-leads 3-phase 60 Hz 2-poles 200V Y P1=4,90KW 6-leads 3-phase 50 Hz 2-poles 110V D 190V Y P1=4KW 6-leads 3-phase 50 Hz 2-poles 110V D 190V Y P1=3,50KW Max ambient temp=90 DC 6-leads 3-phase 60 Hz 2-poles 200V Y P2=4kW/5,40hp	1

Pos. No	Part. No	Type	Denomination	Qty/Version
				324
97	274 16 27		Stator 17-09-2a	1
			6-leads 3-phase 50 Hz 2-poles 190V-200V Y P2=3,70kW	
			6-leads 3-phase 60 Hz 2-poles 200V-220V Y Max P1=4,80KW	
			6-leads 3-phase 50 Hz 2-poles 190V-200V Y P1=4KW	
			6-leads 3-phase 50 Hz 2-poles 190V-200V Y P1=3,50KW Max ambient temp=90 DC	
			6-leads 3-phase 60 Hz 2-poles 200V-220V Y P2=4kW/5,40hp	
97	274 16 32		Stator 17-09-2a	1
			6-leads 3-phase 50 Hz 2-poles 200V-208V D 346V-350V Y P2=3,70kW	
			6-leads 3-phase 60 Hz 2-poles 230V-240V D 400V Y P1=4,80KW	
			6-leads 3-phase 50 Hz 2-poles 200V-208V D 346V-350V Y P1=4,10KW	
			6-leads 3-phase 50 Hz 2-poles 200V-208V D 346V-350V Y P1=3,50KW Max ambient temp=90 DC	
			6-leads 3-phase 60 Hz 2-poles 230V-240V D 400V Y P2=4kW/ 5,40hp	
97	274 16 34		Stator 17-09-2a	1
			6-leads 3-phase 50 Hz 2-poles 220V-230V D 380V-400V Y P2=3,70kW	
			6-leads 3-phase 60 Hz 2-poles 260V D 440V-460V Y P1=4,80KW	
			6-leads 3-phase 50 Hz 2-poles 220V-230V D 380V-400V Y P1=4KW	
			6-leads 3-phase 50 Hz 2-poles 220V-230V D 380V-400V Y P1=3,50KW Max ambient temp=90 DC	
			6-leads 3-phase 60 Hz 2-poles 260V D 440V-460V Y P2=4kW/5,40hp	
97	274 16 44		Stator 17-09-2a	1
			6-leads 3-phase 50 Hz 2-poles 400V-440V D P2=3,70kW	
			6-leads 3-phase 60 Hz 2-poles 480V D P1=4,80KW	
			6-leads 3-phase 50 Hz 2-poles 400V-440V D Max P1=4,10KW	
			6-leads 3-phase 50 Hz 2-poles 400V-440V D Max P1=3,60KW Max ambient temp=90 DC	
			6-leads 3-phase 60 Hz 2-poles 480V D P2=4kW/5,40hp	

Pos. No	Part. No	Type	Denomination	Qty/Version
				324
97	274 16 29		Stator 17-09-2a 6-leads 3-phase 60 Hz 2-poles 220V-230V D 380V Y P1=4,20KW 6-leads 3-phase 60 Hz 2-poles 220V-230V D 380V Y P2=4kW/ 5,40hp	1
97	274 16 51		Stator 17-09-2a 6-leads 3-phase 50 Hz 2-poles 500V-550V Y P2=3,70kW 6-leads 3-phase 60 Hz 2-poles 575V-600V Y P1=4,80KW 6-leads 3-phase 50 Hz 2-poles 500V-550V Y P1=4KW 6-leads 3-phase 50 Hz 2-poles 500V-550V Y P1=3,50KW Max ambient temp=90 DC 6-leads 3-phase 60 Hz 2-poles 575V-600V Y P2=4kW/5,40hp	1
97	274 16 37		Stator 17-09-2a 9-leads 3-phase 60 Hz 2-poles 220V-230V Y// 440V-460V YSER P1=4,80KW 9-leads 3-phase 60 Hz 2-poles 220V-230V Y// 440V-460V YSER P2=4kW/5,40hp	1
97	274 16 38		Stator 17-09-2a 6-leads 3-phase 50 Hz 2-poles 380V-400V D 660V-690V Y P2=3,70kW 6-leads 3-phase 50 Hz 2-poles 380V-400V D 660V-690V Y P1=4KW 6-leads 3-phase 50 Hz 2-poles 380V-400V D 660V-690V Y P1=3,50KW Max ambient temp=90 DC	1
97	312 83 34		Stator 17-11-2a 6-leads 3-phase 50 Hz 2-poles 220V-230V D 380V-400V Y P2=5,50kW 6-leads 3-phase 50 Hz 2-poles 220V-230V D 380V-400V Y Max P1=6,60KW 6-leads 3-phase 60 Hz 2-poles 260V D 440V-460V Y P2=6,60kW/8,90hp	1
97	312 83 27		Stator 17-11-2a 6-leads 3-phase 50 Hz 2-poles 190V-200V Y P2=5,50kW 6-leads 3-phase 50 Hz 2-poles 190V-200V Y Max P1=6,50KW 6-leads 3-phase 60 Hz 2-poles 200V-220V Y P2=6,60kW/8,90hp	1
97	312 83 37		Stator 17-11-2a 9-leads 3-phase 60 Hz 2-poles 220V-230V Y// 440V-460V YSER P2=6,60kW/8,90hp	1

Pos. No	Part. No	Type	Denomination	Qty/Version
				324
97	312 83 38		Stator 17-11-2a 6-leads 3-phase 50 Hz 2-poles 380V-400V D 660V-690V Y P2=5,50kW 6-leads 3-phase 50 Hz 2-poles 380V-400V D 660V-690V Y Max P1=6,50KW	1
97	312 83 29		Stator 17-11-2a 6-leads 3-phase 60 Hz 2-poles 220V-230V D 380V Y P2=6,60kW/ 8,90hp	1
97	312 83 44		Stator 17-11-2a 6-leads 3-phase 50 Hz 2-poles 400V-440V D P2=5,50kW 6-leads 3-phase 50 Hz 2-poles 400V-440V D Max P1=6,80KW 6-leads 3-phase 60 Hz 2-poles 480V D P2=6,60kW/8,90hp	1
97	312 83 52		Stator 17-11-2a 6-leads 3-phase 50 Hz 2-poles 500V-550V D P2=5,50kW 6-leads 3-phase 50 Hz 2-poles 500V-550V D Max P1=6,60KW 6-leads 3-phase 60 Hz 2-poles 575V-600V D P2=6,60kW/8,90hp	1
131	80 95 06		Stud M10X28-A2-70	4
132	81 41 31		Hexagon head screw M10X25-A2-70 ST	4
132	80 95 06		Stud M10X28-A2-70 ST	4
132	81 41 31		Hexagon head screw M10X25-A2-70 ST	6
133	81 93 88		Slotted head screw M6X10-A4-70	4
134	82 50 48		Sealing washer	4
135	82 53 07		Lock washer 432-10.5-A2-A 140	1
137	283 94 00		Gasket	1
141	403 30 00		Pump housing lower	1
142	403 31 00		Pump housing	1
143	403 32 00		Supporting washer	1
144	288 69 00		Strainer unit HT MT	1
144	403 34 00		Strainer ST	2
144	443 05 01		Strainer ST	1
146	406 07 00		Wear protection	1
147	462 76 00		Adjustment washer ST	2
147	462 76 01		Adjustment washer ST	4
248	82 23 33		Hexagon nut M10-A4-70	2
249	82 23 33		Hexagon nut M10-A4-70	8
250	82 23 33		Hexagon nut M10-A4-70	4
254	82 35 76		Plain washer 10.5X20X2-A4-170HV	4
255	82 35 76		Plain washer 10.5X20X2-A4-170HV	6
257	81 93 88		Slotted head screw M6X10-A4-70	8
267	82 35 76		Plain washer 10.5X20X2-A4-170HV	2
267	220 26 00		Gland screw Pr 28.3	1
268	253 76 00		Supporting washer Stator 6-leads	2
268	266 56 01		Supporting washer Stator 9-leads	2

Pos. No	Part. No	Type	Denomination	Qty/Version	
				324	
269	253 75 00		Stator conductor ent	Stator 6-leads	1
269	266 55 01		Stator conductor ent	Stator 9-leads	1
270	389 96 00		Con.term.board unit		1
271	81 73 42		Slotted head screw M4X12-A4-70		1
272	81 73 42		Slotted head screw M4X12-A4-70		2
276	82 35 76		Plain washer 10.5X20X2-A4-170HV	HT MT	4
276	84 55 56		Hose clamp OUTER DIA 90-110 MM	Option	2
277	250 21 00		Gasket	HT MT	1
277	250 21 00		Gasket	HT MT	2
800	80 32 62		O-ring kits NBR		1
800	80 32 63		O-ring kits FPM		1
801	290 12 00		Zinc anode kit		1
815	554 21 05		Starter START 356-600-B-PG-14	356 3-phase 50/60 Hz Max 600 V Current range: 9 - 14 A Thermal contact supervision	1
815	554 21 04		Starter START 356-600-B-PG-10	356 3-phase 50/60 Hz Max 600 V Current range: 6 - 10 A Thermal contact supervision	1
815	554 21 06		Starter START 356-600-B-PG-20	356 3-phase 50/60 Hz Max 600 V Current range: 13 - 18 A Thermal contact supervision	1
815	554 25 04		Starter BCD4-400-B-516-8.0	BCD 4 3-phase 50/60 Hz 380V - 415 V Current range: 5,50 - 8 A Thermal contact supervision Phase sequence indicator Supply connection CEE 5- PLUG 16A Not CSA approved	1
815	554 25 14		Starter BCD4-400-B-532-8.0	BCD 4 3-phase 50/60 Hz 380V - 415 V Current range: 5,50 - 8 A Thermal contact supervision Phase sequence indicator Supply connection CEE 5- PLUG 32A Not CSA approved	1
815	554 25 24		Starter BCD4-400-B-416-8.0	BCD 4 3-phase 50/60 Hz 380V - 415 V Current range: 5,50 - 8 A Thermal contact supervision Phase sequence indicator Supply connection CEE 4- PLUG 16A Not CSA approved	1
815	554 25 34		Starter BCD4-400-B-432-8.0	BCD 4 3-phase 50/60 Hz 380V - 415 V Current range: 5,50 - 8 A Thermal contact supervision Phase sequence indicator Supply connection CEE 4- PLUG 32A Not CSA approved	1
815	554 30 04		Starter START 351-400-B-516-10	351 3-phase 50/60 Hz 380V - 415 V Current range: 6 - 10 A Thermal contact supervision Phase sequence indicator Supply connection CEE 5- PLUG 16A Not CSA approved	1
815	554 30 05		Starter START 351-400-B-516-14	351 3-phase 50/60 Hz 380V - 415 V Current range: 9 - 14 A Thermal contact supervision Phase sequence indicator Supply connection CEE 5- PLUG 16A Not CSA approved	1

Pos. No	Part. No	Type	Denomination	Qty/Version	
				324	
815	554 30 14		Starter START 351-400-B-532-10	351 3-phase 50/60 Hz 380V - 415 V Current range: 6 - 10 A Thermal contact supervision Phase sequence indicator Supply connection CEE 5- PLUG 32A Not CSA approved	1
815	554 30 15		Starter START 351-400-B-532-14	351 3-phase 50/60 Hz 380V - 415 V Current range: 9 - 14 A Thermal contact supervision Phase sequence indicator Supply connection CEE 5- PLUG 32A Not CSA approved	1
815	554 30 24		Starter START 351-400-B-416-10	351 3-phase 50/60 Hz 380V - 415 V Current range: 6 - 10 A Thermal contact supervision Phase sequence indicator Supply connection CEE 4- PLUG 16A Not CSA approved	1
815	554 30 25		Starter START 351-400-B-416-14	351 3-phase 50/60 Hz 380V - 415 V Current range: 9 - 14 A Thermal contact supervision Phase sequence indicator Supply connection CEE 4- PLUG 16A Not CSA approved	1
815	554 30 34		Starter START 351-400-B-432-10	351 3-phase 50/60 Hz 380V - 415 V Current range: 6 - 10 A Thermal contact supervision Phase sequence indicator Supply connection CEE 4- PLUG 32A Not CSA approved	1
815	554 30 35		Starter START 351-400-B-432-14	351 3-phase 50/60 Hz 380V - 415 V Current range: 9 - 14 A Thermal contact supervision Phase sequence indicator Supply connection CEE 4- PLUG 32A Not CSA approved	1
815	554 30 73		Starter START 351-500-B-432-6.3	351 3-phase 50/60 Hz 500V Current range: 4 - 6,30 A Thermal contact supervision Phase sequence indicator Supply connection CEE 4- PLUG 32A Not CSA approved	1
815	554 30 74		Starter START 351-500-B-432-10	351 3-phase 50/60 Hz 500V Current range: 6 - 10 A Thermal contact supervision Phase sequence indicator Supply connection CEE 4- PLUG 32A Not CSA approved	1
900	601 90 18		Basic repair kit	ONLY FOR MT & HT INNER: WCCR - WCCR OUTER: WCCR - WCCR	1



ООО «Бауманс Груп» - официальный партнер фирмы Flygt в России.

Тел: +7 495 121 49 50

Эл. почта: info@baumgroup.ru

Сайт: www.baumgroup.ru